

RICHMOND AUBURN



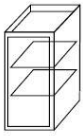
STYLE | FEATURES:

- All wood cabinetry
- Raised panel doors
- Wood drawer boxes
- Plywood sides, shelves & cabinet bases

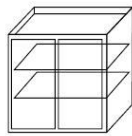
SPECIFICATIONS:

- - All wood construction
- - 3/4" Solid maple face frame
- - Solid maple raised panel doors and drawer fronts with veneer center panels
- - 1/2" plywood box construction
- - 5/8" plywood shelves
- - Full overlay doors and drawer fronts
- - 6 way adjustable concealed hinges
- - Solid wood dovetail drawer box with undermount drawer glides

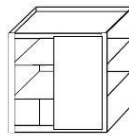
KITCHEN LINE ART



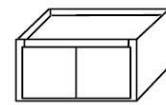
ITEM NO.
W 0930
W 1230
W 1530
W 1830
W 2130



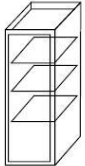
ITEM NO.
W 2430
W 2730
W 3030
W 3330
W 3630
W 4230



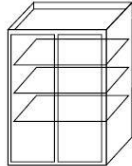
ITEM NO.
WBC2730-L/R



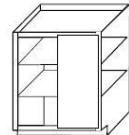
ITEM NO.
W 3012
W 3612
W 3015
W 3018
W 3024
W 3624



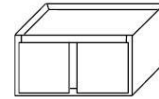
ITEM NO.
W 0942
W 1242
W 1542
W 1842
W 2142



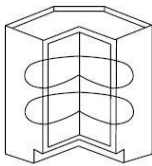
ITEM NO.
W 2442
W 2742
W 3042
W 3342
W 3642
W 4242



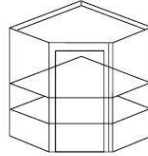
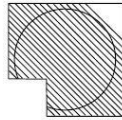
ITEM NO.
BBC42-45



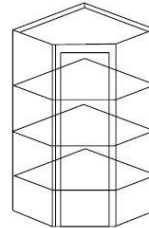
ITEM NO.
W 3315 W 301224
W 3615 W 331224
W 2415 W 331524
W 361524
W 332424
W 362424



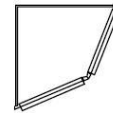
DCB3612



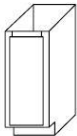
ITEM NO.
WDC2430



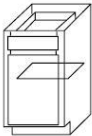
ITEM NO.
WDC244212
WDC274215



ITEM NO.
BC24



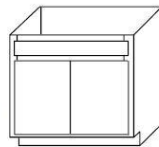
ITEM NO.
B09FH



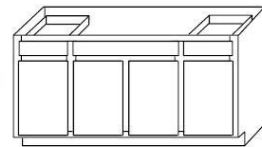
ITEM NO.
B12
B15
B18
B21



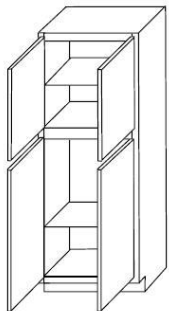
ITEM NO.
B24
B27
B30
B33
B36
B42 } W/2 - Drawers



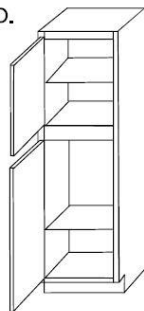
ITEM NO.
SB30
SB33
SB36
SB42 } W/2 - Drawer Fronts



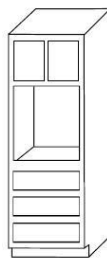
ITEM NO. SB60



ITEM NO.
WP2484
WP2496



ITEM NO.
WP1884
WP1896

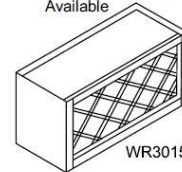


ITEM NO.
OU3084
OU3384



ITEM NO.
DB15-3
DB18-3
DB21-3
DB30-3

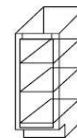
Stem Glass Holder Available



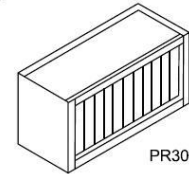
WR3015



TK8



SRI Spice Rack Available



PR3015



VA48

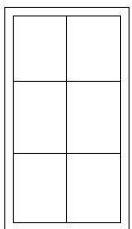


VAS48

Light Rail 7"
Outside Corner 7"
Scribe 7"



CM-8



MULLION DOORS
1530MD
1830MD
3030MD-MC
3630MD-MC
DC2430MD
1542MD
1842MD
3042MD-MC
3642MD-MC
DC2442MD
DC2742MD

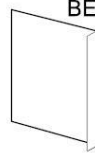
30 DD - Deco Door
42 DD - Deco Door
B DD - Deco Door



RP84
RP96



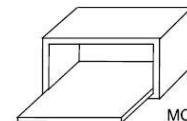
BF3
F642
FS30



BEP3L



CSF36
CSF Floor Available



MC3018



END PANELS
EP2435
WEP1242
3'X 4' ISLAND PANEL

ORDER FORM

Print out the order form for the model of kitchen cabinets you wish to order. When completed please fax your order to 1-888-419-8507 or e-mail to sales@wisebuysstore.com and we will provide you with an estimate.

See above (page 2) for line art of cabinets below.
Only models listed below are available in the above cabinet style

WALL CABINETS

MODEL	MEASUREMENT	QUANTITY
W0930-RMA	9" w x 30" h x 12" d	
W1230-RMA	12" w x 30" h x 12" d	
W1530-RMA	15" w x 30" h x 12" d	
W1830-RMA	18" w x 30" h x 12" d	
W2130-RMA	21" w x 30" h x 12" d	
W2430-RMA	24" w x 30" h x 12" d	
W2730-RMA	27" w x 30" h x 12" d	
W3030-RMA	30" w x 30" h x 12" d	
W3330-RMA	33" w x 30" h x 12" d	
W3630-RMA	36" w x 30" h x 12" d	
WBC2730-RMA	27" w x 30" h x 12" d	
WDC2430-RMA	24" w x 30" h x 12" d	
<i>Return filler required (FS30) for WBC2730. Must be ordered separately</i>		
W3012-RMA	30" w x 12" h x 12" d	
W3612-RMA	36" w x 12" h x 12" d	
W2415-RMA	24" w x 15" h x 12" d	
W3015-RMA	30" w x 15" h x 12" d	
W3315-RMA	33" w x 15" h x 12" d	
W3615-RMA	36" w x 15" h x 12" d	
W3018-RMA	30" w x 18" h x 12" d	
W3618-RMA	36" w x 18" h x 12" d	
W3024-RMA	30" w x 24" h x 12" d	
W3624-RMA	36" w x 24" h x 12" d	
W331224-RMA	33" w x 12" h x 24" d	
W361224-RMA	36" w x 12" h x 24" d	
W331524-RMA	33" w x 15" h x 24" d	
W361524-RMA	36" w x 15" h x 24" d	
W361824-RMA	36" w x 18" h x 24" d	
36" HIGH WALL CABINETS		
MODEL	MEASUREMENT	QUANTITY
W0936-RMA	9" w x 36" h x 12" d	
W1236-RMA	12" w x 36" h x 12" d	
W1536-RMA	15" w x 36" h x 12" d	
W1836-RMA	18" w x 36" h x 12" d	
W2136-RMA	21" w x 36" h x 12" d	
W2436-RMA	24" w x 36" h x 12" d	

W2736-RMA	27" w x 36" h x 12" d	
W3036-RMA	30" w x 36" h x 12" d	
W3336-RMA	33" w x 36" h x 12" d	
W3636-RMA	36" w x 36" h x 12" d	
WDC2436-RMA	24" w x 36" h x 12" d	
WDC2736-RMA	27" w x 36" h x 12" d	

* Reversible Hinge

BASE CABINETS

MODEL	MEASUREMENT	QUANTITY
BO9FH-RMA	9" w X 34 ½" h X 24" d	
B12-RMA	12" w x 34 ½" h x 24" d	
B15-RMA	15" w x 34 ½" h x 24" d	
B18-RMA	18" w x 34 ½" h x 24" d	
B21-RMA	21" w x 34 ½" h x 24" d	
B24-RMA	24" w x 34 ½" h x 24" d	
B27-RMA	27" w x 34 ½" h x 24" d	
B30-RMA	30" w x 34 ½" h x 24" d	
B33-RMA	33" w x 34 ½" h x 24" d	
B36-RMA	36" w x 34 ½" h x 24" d	
BBC42-45-RMA	36" w x 34 ½" h x 24" d	
<i>Return filler required (BF3) for BBC42-45. Must be ordered separately</i>		
<i>BBC42-45 Requires the cabinet to be pulled out from the wall 6" min to 9" max</i>		
DB15-RMA	15" w x 34 ½" h x 24" d	
DB18-RMA	18" w x 34 ½" h x 24" d	
DB21-RMA	21" w x 34 ½" h x 24" d	
DB24-RMA	24" w x 34 ½" h x 24" d	
DB30-RMA	30" w x 34 ½" h x 24" d	
DCB3612-RMA	36" w x 34 ½" h x 24" d	
<i>DCB3612 (Lazy Susan) Requires 36" of wall space on both walls</i>		
BC24-RMA	24" w x 34 ½" h x 24" d	
SB30-RMA	30" w x 34 ½" h x 24" d	
SB33-RMA	33" w x 34 ½" h x 24" d	
SB36-RMA	36" w x 34 ½" h x 24" d	
SB42-RMA	42" w x 34 ½" h x 24" d	
WP1884-RMA	18" w x 84" h x 24" d	
WP2484-RMA	24" w x 84" h x 24" d	
WP1890-RMA	18" w x 90" h x 24" d	
WP2490-RMA	24" w x 90" h x 24" d	
OU332484-RMA	33" w x 84" h x 24" d	
OU332490-RMA	33" w x 90" h x 24" d	

* Reversible Hinge

ACCESSORIES

MODEL	MEASUREMENT	QUANTITY
TK8-RMA Toe Kick	8" w x 4 ½" h x ½" d	
CM8-RMA Crown Mould		
LRM7-RMA Light Rail		

OSC7-RMA Outside Corner Moulding		
SCM7-RMA Scribe Moulding		
VA48-RMA Straight Valance	48" w x 4 1/2" h x 1/2" d	
VAS48-RMA Scalloped Valance	48" w x 4 1/2" h x 1/2" d	
F330-RMA Wall Filler	3" w x 30" h x 1/2" d	
F336-RMA Wall Filler	3" w x 36" h x 1/2" d	
F636-RMA Wall Filler	6" w x 36" h x 1/2" d	
BF3-RMA Base Filler	3" w x 36 1/2" x 1/2" d	
BEP3LT-RMA Dishwasher Panel	3" w x 36 1/2" h x 24" d	
Base End Panel	24" d x 35" h x 3/16" Thick	
Wall End Panel	12" d x 42" h x 3/16" Thick	
Island Panel	4' w x 3' h x 1/4" Thick	
RP84-RMA Fridge Panel	1 1/2" w x 84" h x 24" d	
RP90-RMA Fridge Panel	1 1/2" w x 90" h x 24" d	
MC3018-RMA Microwave Box	30" w x 18" h x 12" d	
PR3015-RMA Plate Rack	30" w x 15" h x 12" d	
WR3015-RMA Wine Rack	30" w x 15" h x 12" d	
SGH30-RMA Stem Glass Holder	30" w x 12" d	
1530 Mullion Door-RMA		
1830 Mullion Door-RMA		
3030 Mullion Door-RMA		
3630 Mullion Door-RMA		
DC2430 Mullion Door-RMA		
1536 Mullion Door-RMA		
1836 Mullion Door-RMA		
3036 Mullion Door-RMA		
3636 Mullion Door-RMA		
DC2436 Mullion Door-RMA		
DC2736 Mullion Door-RMA		
CSF36-RMA False Front		
<i>CSF36 Requires 36" of wall space on both walls, CSF floor not included</i>		
CSF Floor Natural Maple Only	36" x 36"	
30DD-RMA Wall Deco Door		
36DD-RMA Wall Deco Door		
42DD-RMA Wall Deco Door		
BDD-RMA Base Deco Door		

CUSTOMER INFORMATION

Name:	
Address:	
Telephone:	Alternate Phone:
E-Mail Address:	
APPROVED BY CUSTOMER X	Date: